

SUSHI MENU

Please be advised that food prepared here may contain or be in contact with Shellfish, Sesame seeds, Avo, Cucumber, Meat & Dairy

Use blue code when ordering

FASHION SANDWICH



Salmon (FS) | Vegetarian,
Prawn (FP) | Avo &
Tuna (FT) | Cucumber (FV)
R135 | **R105**

RAINBOW ROLL



Salmon (RS) | Vegetarian,
Prawn (RP) | Avo &
Tuna (RT) | Cucumber (RV)
R160 | **R135**

CALI FORNIA ROLL



Salmon (CS) | Vegetarian,
Prawn (CP) | Avo &
Tuna (CT) | Cucumber (CV)
R135 | **R105**

NIGIRI



Salmon (NS) | **R110**
Prawn (NP) |
Tuna (NT) |

NIGIRI CRUNCH

Prawn (CRNP) | **R60**

HAND ROLL



Salmon (HS) | Vegetarian,
Prawn (HP) | Avo &
Tuna (HT) | Cucumber (HV)
R95 | **R80**

CRUNCH HAND ROLL

Prawn (CRHP) | Calamari (CRCP)
R105 | **R95**

SALMON ROSES



Salmon (SR) | **R115**

SASHIMI



Salmon (SS) | Tuna (ST)
R95 | **R90**

PRAWN AVALANCHE



(PA) Prawn California roll topped with fried prawn meat, dressed with avalanche sauce
R175

CRUNCH ROLL



Fried California Roll dressed with Sweet Chili Mayo & Teriyaki Sauce

Salmon (CRS) |
Prawn (CRP) |
Tuna (CRT) |
R160

CALAMARI BOMB



(CB) California roll with crispy calamari inner, topped with fried calamari strips, dressed with sweet chili mayo & teriyaki sauce
R160

OCEAN EXPLOSION



(OE) Rainbow Tuna & Salmon Roll topped with Tempura Prawns, dressed with Lemon Dill Mayo
R185

KIDDIES

(KV) Vienna Crunch Roll
R110

KIDDIES

(KC) Crispy Chicken & Avo Parcel
R115

EXTRAS

Crunchy Calamari Strips (CA)
R120

Crunchy Chicken Strips (CH)
R115

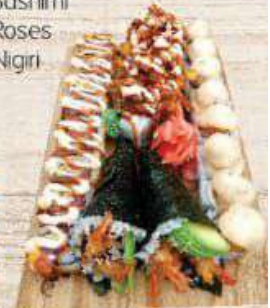
COMBOS

COMBO 1 SALMON PLATTER



16PC
2x Salmon Hand Rolls
8x Salmon Rainbow Rolls
2x Salmon Sashimi
2x Salmon Roses
2x Salmon Nigiri
R480

COMBO 2 CRUNCH PLATTER



26PC
8x Prawn Avalanche
8x Calamari Bomb
8x Crunch Roll Tuna
2x Crunch Hand Roll Prawn
R630

EXTRA SAUCE

Kewpie Mayo **R20**
Lemon Dill Mayo **R22**
Avalanche Sauce **R22**
Sweet Chili Mayo **R22**
Teriyaki **R15**
Sweet Chili **R15**